

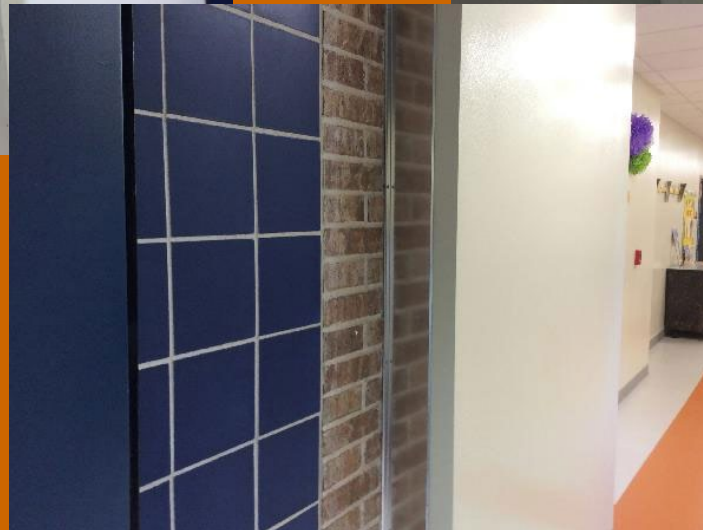
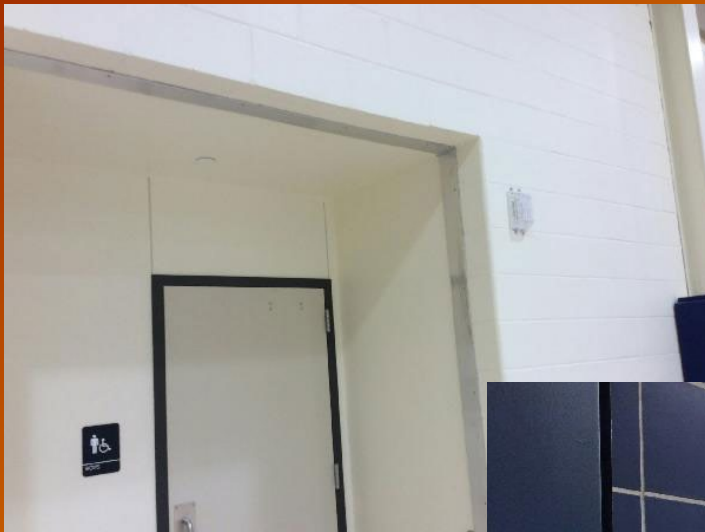


2019 Bond Monthly Update

October 12, 2021

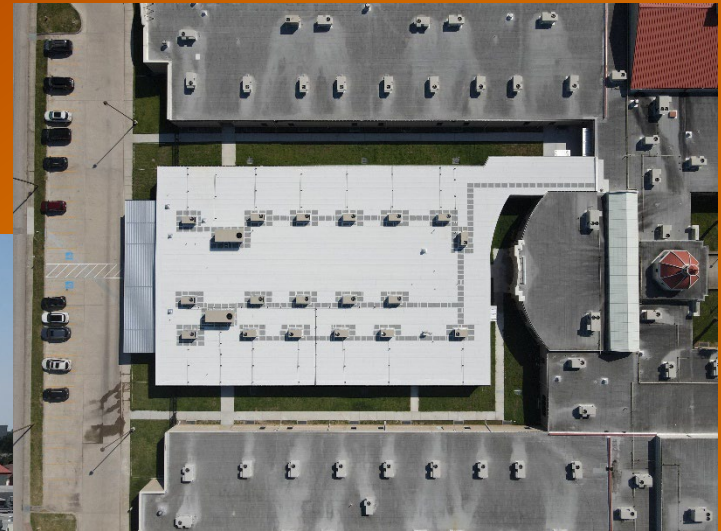
Elementary Additions

- Ⓜ Punchlist near Complete
- Ⓜ Landscape/Sitework Complete
- Ⓜ Test and Air Balance Items Continue Review





William Adams



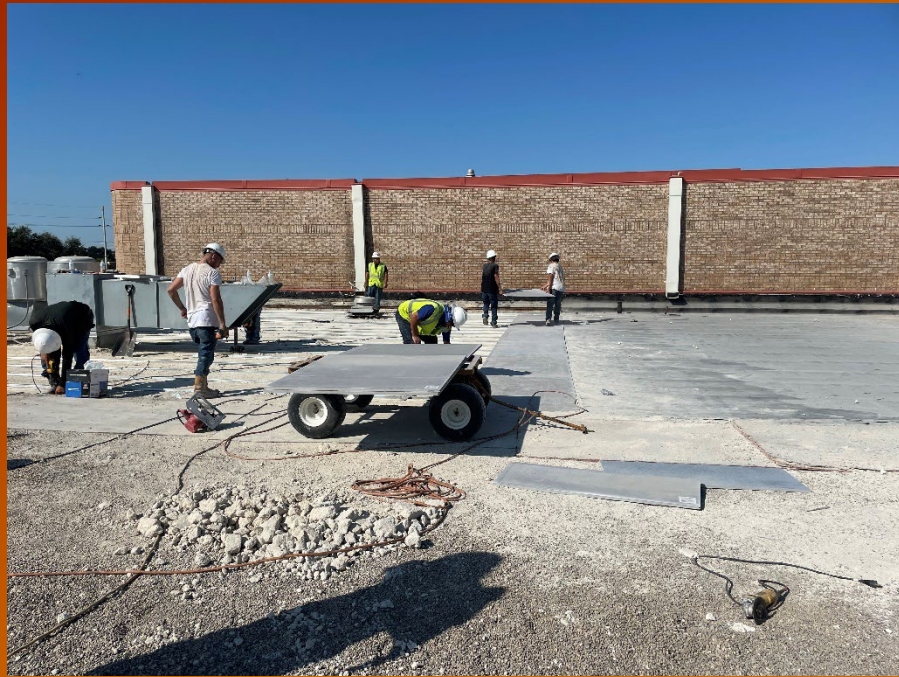
- Ⓜ Punchlist near Complete
- Ⓜ Landscaping/Sitework Completing
- Ⓜ Upgrades to Existing – Flooring to Complete this weekend
- Ⓜ Lighting and Acoustic Upgrades – Start this month



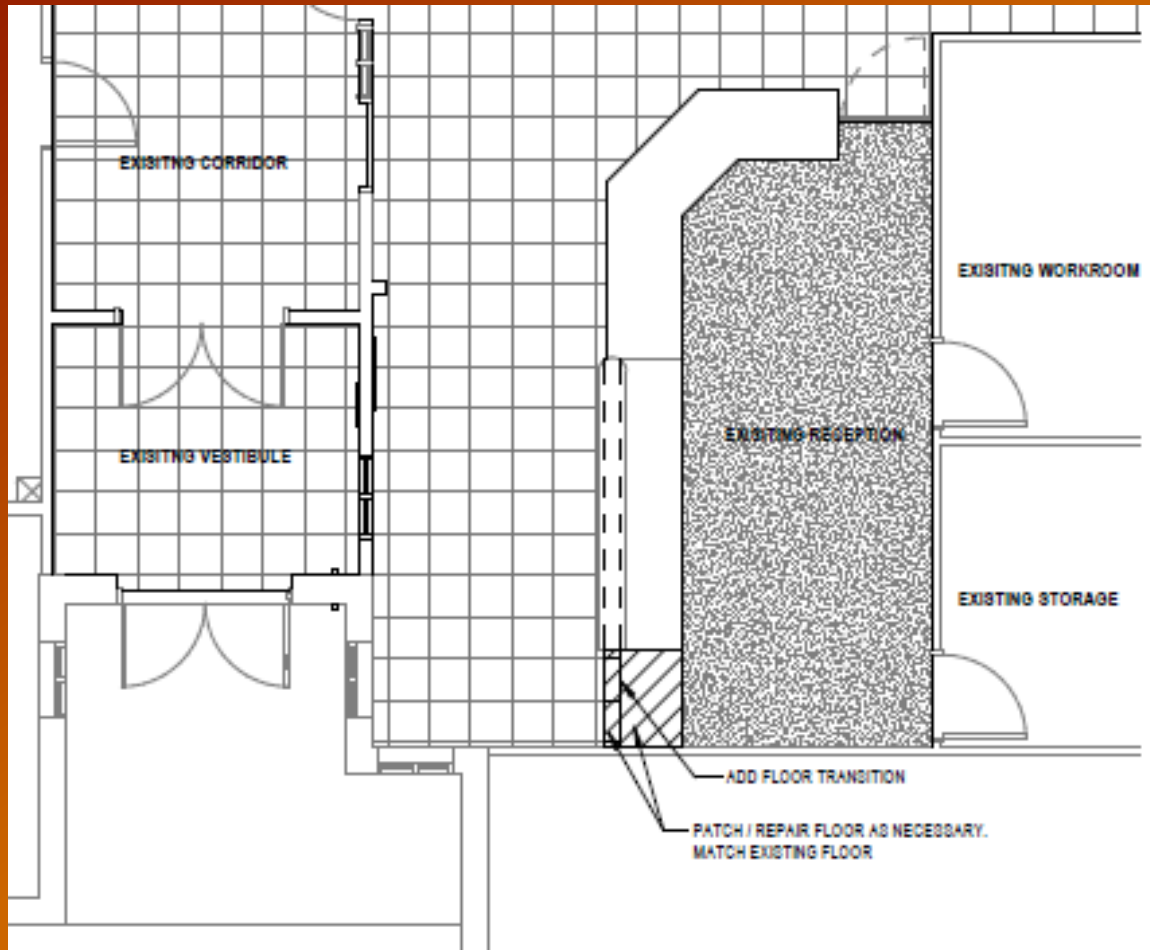
AHS Roofing – Phase 1

- Ⓜ Tear-Off and Temporary Layer on 400 Wing
- Ⓜ Starting on Library/Mall Roofing
- Ⓜ Roof Drain piping has to be Modified
- Ⓜ New Gas line Installed for Culinary Class





Secured Vestibules



TRANSACTION WINDOW SPECIFICATION

INSULGARD 2LH TRANSACTION WINDOW
UL 752 LEVEL 1-3

MANUAL HORIZONTAL SLIDE OPERATION WITH LOCKING HARDWARE
CUSTOM FABRICATED TO MEET APPLICATION REQUIREMENTS
ANODIZED OR PAINTED FINISHES





2019 Bond Program Financial Summary

October 12, 2021



Owners Building
Resource, LP.

Project	Original Budget	REVISED BUDGET	Committed Costs	Contingency Funds in Contracts	Change Orders	Total Committed	Budget Balance	Expenditures to Date	Expenditure Balance
Dubose Campus Addition	\$ 2,237,082	\$ 2,237,082	\$ 2,177,401	\$ 27,423	\$ -	\$ 2,177,401	\$ 59,681	\$ 1,987,803	\$ 189,598
WAMS Campus Addition	\$ 5,592,705	\$ 5,592,705	\$ 4,641,994	\$ (117,353)	\$ -	\$ 4,641,994	\$ 950,711	\$ 4,206,744	\$ 435,250
Noonan Campus Addition	\$ 2,796,353	\$ 2,796,353	\$ 2,744,764	\$ 75,662	\$ -	\$ 2,744,764	\$ 51,589	\$ 2,501,400	\$ 243,363
Saenz Campus Addition	\$ 2,796,353	\$ 2,796,353	\$ 2,852,872	\$ 69,003	\$ -	\$ 2,852,872	\$ (56,520)	\$ 2,602,291	\$ 250,581
Schallert Campus Addition	\$ 2,796,353	\$ 2,796,353	\$ 3,010,085	\$ 86,678	\$ -	\$ 3,010,085	\$ (213,732)	\$ 2,739,399	\$ 270,686
High School Roofing & Parking Lots	\$ 2,907,955	\$ 3,581,460	\$ 3,579,317	\$ 130,191	\$ (147,120)	\$ 3,432,197	\$ 149,263	\$ 2,072,342	\$ 1,359,855
Contingency Funds	\$ 1,075,500	\$ 401,995	\$ -	\$ -	\$ -	\$ -	\$ 401,995	\$ -	\$ -
Miscellaneous & FFE	\$ 587,700	\$ 587,700	\$ 917,805	\$ -	\$ -	\$ 917,805	\$ (330,105)	\$ 723,015	\$ 194,791
TOTALS	\$ 20,790,000	\$ 20,790,000	\$ 19,924,238	\$ 271,604	\$ (147,120)	\$ 19,777,118	\$ 1,012,882	\$ 16,832,994	\$ 2,944,124



Non-Bond Projects Update

October 12, 2021

Multi-Purpose Facility

